



Driving Directions: GCATEC

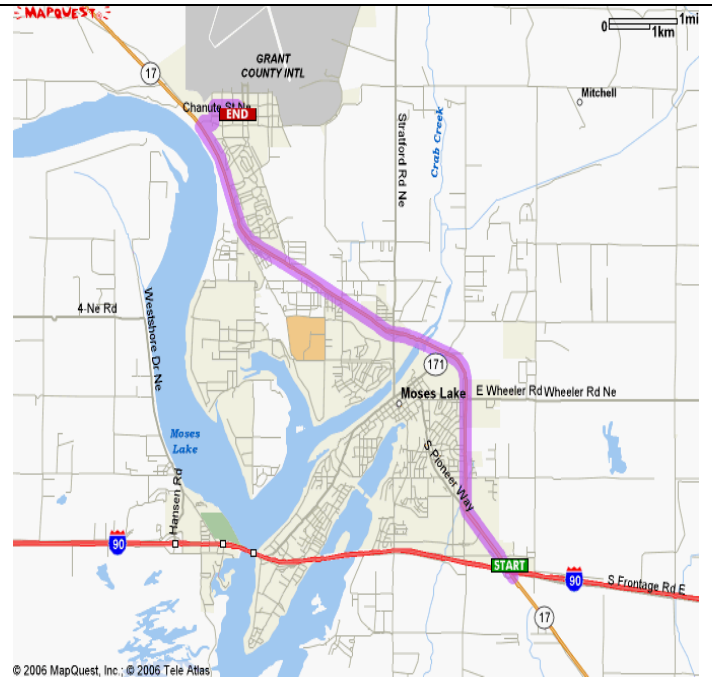
START From I-90 exit 179. Go north on Hwy 17 toward Ephrata.

 Stay in the right hand lane as Hwy 17 bears right approximately 1/2 mile from I-90 exit.

 Follow Hwy 17 to Patton Blvd and turn right.

 Follow Patton Blvd to Bolling St. NE and turn Left

END End at Bldg 1800, 7611 Bolling St. NE, Moses Lake, WA 98837. Grant County Advanced Technologies Education Center and Library.



Welcome to Big Bend Community College, Grant County Advanced Technologies Education Center and Library.

Our conference center is capable of hosting large meetings, trainings and formal events of more than 300 people. The main room boasts a 17' X 13' rear projection screen and stage area with handicap access. The main room can be divided into four smaller rooms for groups as small as 25. We also have 4 meeting rooms separate from our main conference room capable of holding from 10 to 25 participants. Some of the services we can provide in each room include:

Interactive video conferencing, point to point or Multi-point

Satellite programming

Video and DVD recording and editing

Catering

On-site restaurant and Starbucks coffee bar.

Wireless internet access

Adjustable lighting

Standard and custom event setups

Built-in screens and presentation projector with remotes

Document Camera

Podiums with built-in computer including screen and keyboard, microphone, VCR and CD/DVD players, laptop and flash drive connections.

Whiteboards, easels and pads, and lapel microphones

Other special services and facilities available upon request

For further information contact: Jeremy Iverson at 509-793-2370 or jeremyi@bigbend.edu.